

# Altamura

## General Information

**Site Name:** Altamura

**Synonym Name(s):**

**Site Type:** cave

**More Info to Site Type:**

**Discovery Year:** 1993

**First Description:**

**Chronological Abstract:**

## Location

 Loading Google Maps...

**Country:** Italy

**General Location Description:** Lamalunga Cave, karstic cave near Altamura, Bari, entrance opening at 455m asl (Martimucci & Perrucci 2000).

## Coordinates

**Latitude (WGS84):** 40.878° N

**Longitude (WGS84):** 16.55° E

**Altitude:** 455m

**GIS Precision:** Map site coordinates

**Other Coordinates:**

## Pix

## Linked Files / Pages

**Collection Item(s):**

**Bibliography:** Alhaique et al. 2005

**Multimedia Files:**

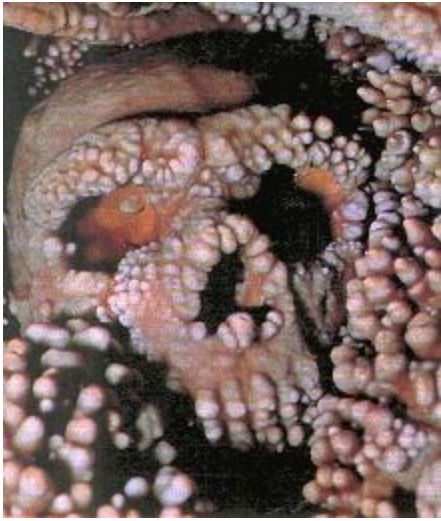
**Linked Pages:** [Italy - Neanderthal Grotta di Lamalunga - virtual tour](#)

**Index:**

[Expand all](#) [Collapse all](#)

## Additional Content

In October 1993, a group of speleologists exploring the Lamalunga cave - one of the numerous karstic caves in the region - run into the complete skeleton of a prehistoric man dating back to about 130 000 years ago. The man had remained trapped in the cave, which is part of the Altamura Murge area and is currently one of its most significant elements. It is made up of several galleries extended not far beneath the limestone surface, which is crossed by vertical pits.



Copyright [www.rome-interreg.com](http://www.rome-interreg.com)

[top of page](#)