

# Rochelot d1 - molar M1

## General Information

**Name:** molar M1

**Synonym Name(s):**

**First Description:**

**Repository:** Musée des Beaux-Arts d'Angoulême

**Property Status:** Ville d'Angoulême

**Copyright Holder(s):** Musée des Beaux-Arts d'Angoulême

**Curator(s):** Jean-Francois Tournepiche

**Cultural Attribution:** Middle Palaeolithic: Mousterian

**Geochronological Attribution:**

OIS 5

## Taxon / Sex / Age Group

**Taxon:** Neanderthal

**Sex:** Undefined

**Age Group:** adult (20yrs or more)

## Morphometrics

## Pathology / Preservation

**Pathology:**

**Pathology Bibliography:**

**Preserved Skeletal Party:** molar M1

**Laterality:** left

**Polarity:** lower

**Preservation:** complete

**Preservation Details:**

**Human Activity:**

**Carnivore Activity:**

## Age Determination

**Dating Abstract:** This remain is dated from Würm 1

**Dating Association:** Relative Dating

**Dating Analysis:**

## Pix

## Discovery

**Location:**

**X Coordinate:**

**Y Coordinate:**

**Z Coordinate:**

**Unit:** m

## Linked Files / Pages

**Data Type:**

**Collection Item(s):**

**Bibliography:** Poisson et al. 2002

**Multimedia Files:**

STL\_Rochelot\_Molar

**Linked Pages:**

France - Neanderthal

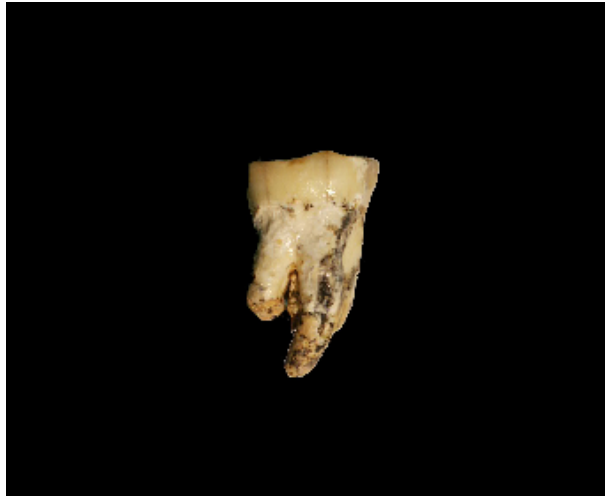
**Index:**

## Additional Content

This tooth is not described in an article. It's just cited in Poisson et al 2002. (c) Arnaud Mazurier.



(c) Arnaud Mazurier



(c) Arnaud Mazurier



top of page