

Pedmostí I - individuum P1

General Information

Name: Pedmostí 1

Synonym Name(s):

First Description: K.J. Maška 1894

Repository:

Property Status:

Copyright Holder(s): Department of Anthropology and Human Genetics, Faculty of Science, Charles University in Prague

Curator(s):

Cultural Attribution: Upper Palaeolithic: Gravettian

Geochronological Attribution:

Taxon / Sex / Age Group

Taxon: Homo sapiens

Sex: Male

Age Group: adult (20y or more)

Morphometrics

Age Determination

Dating Abstract:

Dating Association:

Dating Analysis:

Pix



© Department of Anthropology and Human Genetics, Faculty of Science, Charles University in Prague

Skull without maxilla with mandible (P1), lateral view (sin) ©

Discovery

Location:

Linked Files / Pages

Collection Item(s):

Bibliography:

Multimedia Files:

Linked Pages:

Czech Republic - Anatomically Modern human
Repository Czech Republic - Homo sapiens sapiens

Index:

Additional Content



© Department of Anthropology and Human Genetics, Faculty of Science, Charles University in Prague

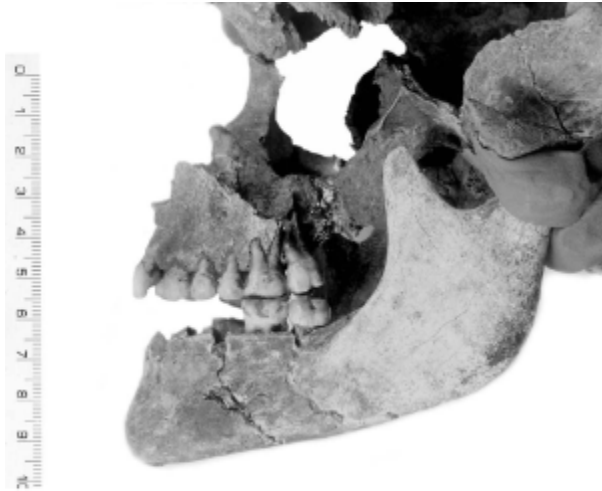
Skull with mandible P1 lateral view © Department of

© Department of Anthropology and Human Genetics, Faculty of Science, Charles University in Prague

Skull

Department of Anthropology and Human Genetics, Faculty of Science, Charles University Prague).

Anthropology and Human Genetics, Faculty of Science, Charles University Prague).
Departme
Faculty c



© Department of Anthropology and Human Genetics, Faculty of Science, Charles University in Prague

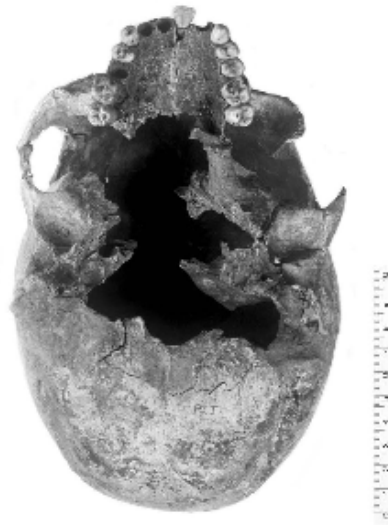
© Department of Anthropology and Human Genetics, Faculty of Science, Charles University in Prague.

© Depa
Char

Maxilla and mandible (P1), lateral view (sin) © Department of Anthropology and Human Genetics, Faculty of Science, Charles University Prague).

Skull without maxilla with mandible (P1), superior view © Department of Anthropology and Human Genetics, Faculty of Science, Charles University Prague).

Skull with
Genetics



© Department of Anthropology and Human Genetics, Faculty of Science, Charles University in Prague

© Department of Anthropology and Human Genetics, Faculty of Science, Charles University in Prague

© Depa
Char

Skull (P1), superior view © Department of Anthropology and Human Genetics, Faculty of Science, Charles University Prague).

Skull (P1), basal view © Department of Anthropology and Human Genetics, Faculty of Science, Charles University Prague).

Skull
Faculty c