

# CT Pan troglodytes - PRI-9266 No 346

## The Source

Data provided by [Digital Morphology Museum, KUPRI](#)

## General Information

### Object Name:

CT Pan troglodytes - PRI-9266 No 346

### Synonym(s):

GAIN461, Yoshio

### Data type:

CT scan

### Country of Origin:

unkown

### Repository:

Primate Research Institute, Kyoto University

### Property Status:

Primate Research Institute, Kyoto University

### Copyright Holder(s):

Primate Research Institute, Kyoto University

### Curator(s):

### Files DMM-KUPRI:

[KUPRI]<http://www.pri.kyoto-u.ac.jp/dmm/WebGallery/dicom/dicomProperty.html?id=346>

If link is not working try: [http://dmm.pri.kyoto-u.ac.jp/dmm/WebGallery/...](http://dmm.pri.kyoto-u.ac.jp/dmm/WebGallery/)

## Taxon & Sex & Age Group

### Sex:

Male

### Age Group:

adult

## Age Determination

### Chronology:

Recent

## Additional Content

## Assignments & Hyperlinks

**Linked Pages:**

**Bibliography Item(s):**

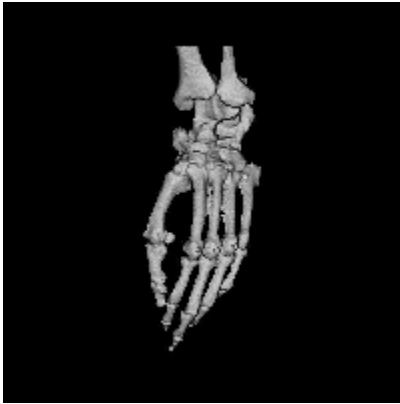
**Index:**

**Pathology and Preserved skeletal parts**

**Preserved skeletal parts:**

foot bone

**Pix**



[KUPRI|<http://www.pri.kyoto-u.ac.jp/dmm/WebGallery/dicom/dicomProperty.html?id=346>]