

Abri Bourgeois-Delaunay - incisor di1 (BDA)

General Information

Name: BDA

Synonym Name(s):

First Description:

Repository: Musée des Beaux-Arts d'Angoulême

Property Status: Ville d'Angoulême

Copyright Holder(s): Musée des Beaux-Arts d'Angoulême

Curator(s): Jean-Francois Tournepiche

Cultural Attribution:

Geochronological Attribution:

Taxon / Sex / Age Group

Taxon: Neanderthal

Sex: Undefined

Age Group: undetermined

Morphometrics

Pathology / Preservation

Pathology:

Pathology Bibliography:

Preserved Skeletal Party: deciduous incisor di1

Laterality: right

Polarity: lower

Preservation: complete

Preservation Details:

Human Activity:

Carnivore Activity:

Age Determination

Dating Abstract:

Dating Association:

Dating Analysis:

Pix

Discovery

Location:

X Coordinate:

Y Coordinate:

Z Coordinate:

Unit: m

Linked Files / Pages

Data Type:

Collection Item(s):

Bibliography:

Multimedia Files:

STL_BDA

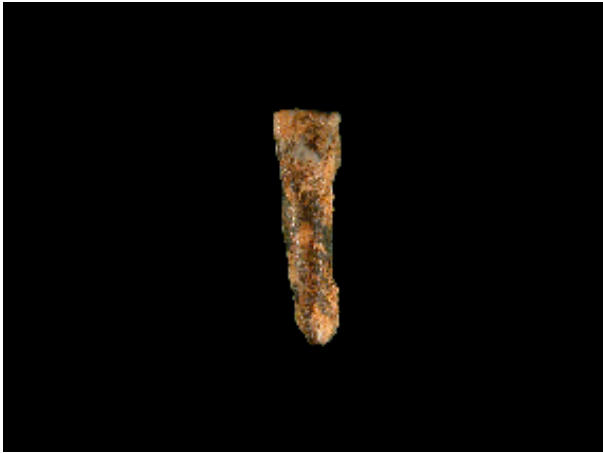
SRmicroCT_BDA, info

Linked Pages: [France - Neanderthal](#)

Index:

Additional Content

This tooth is unpublished



(Photo Aude Bergeret, Musée des Beaux-Arts d'Angoulême 2005).



(Photo Aude Bergeret, Musée des Beaux-Arts d'Angoulême 2005).



(Photo

[top of page](#)