

Abri Suard David - mandible (S5)

General Information

Name: S5
Synonym Name(s): La Chaise 13
First Description: David 1951
Repository: Musée des Beaux-Arts d'Angoulême
Property Status: Ville d'Angoulême
Copyright Holder(s): Musée des Beaux-Arts d'Angoulême
Curator(s): Jean-Francois Tournepiche
Cultural Attribution: unknown
Geochronological Attribution:

Taxon / Sex / Age Group

Taxon: Neanderthal
Sex: Undefined
Age Group: adult (20yrs or more)

Morphometrics

Pathology / Preservation

Pathology:
Pathology Bibliography:
Preserved Skeletal Party: mandible with incomplete dentition M1
Laterality: left
Polarity: lower
Preservation: fragmentary
Preservation Details:
Human Activity:
Carnivore Activity:

Age Determination

Dating Abstract: This remains comes from the layer VI, attributed to the Riss III
Dating Association: Relative Dating
Dating Analysis:

Pix

Discovery

Location:
X Coordinate:
Y Coordinate:
Z Coordinate:
Unit: m

Linked Files / Pages

Data Type:
Collection Item(s):
Bibliography:
David 1951
Legoux 1966a
Teilhol 2001
Tillier, Genet-Varcin 1980

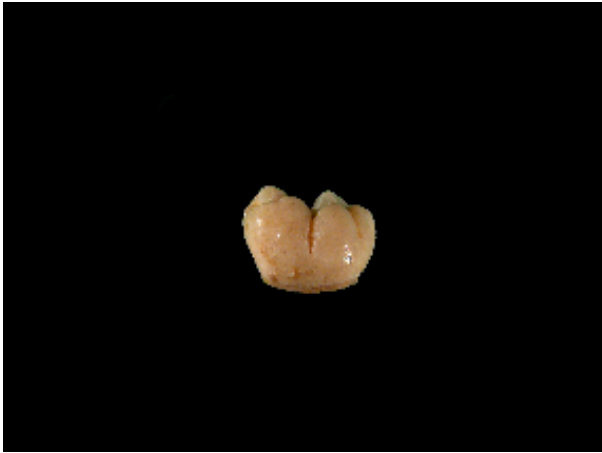
Multimedia Files:
STL_S5
SRmicroCT_S5, info

Linked Pages:
France - Neanderthal

Index:

Additional Content

It's a mandible with the left portion of the horizontal branch with the two deciduous molars. The horizontal branch is broken at the socket containing the germ of the first permanent molar. It's joints with S10, forming the mandible S5-S10. But actually, only the first permanent molar is present. Only molds are available for the mandible. Metrics (formerly Measures) Available in [udpdata:Tillier, Genet-Varcin 1980]



(c) Aude Bergeret, Musée des Beaux-Arts d'Angoulême 2005



(c) Aude Bergeret, Musée des Beaux-Arts d'Angoulême 2005

[top of page](#)