

Abri Suard David - cranium (S17)

General Information

Name: S17

Synonym Name(s): La Ch. 3

First Description: David, Piveteau 1953

Repository: Musée des Beaux-Arts d'Angoulême

Property Status: Ville d'Angoulême

Copyright Holder(s): Musée des Beaux-Arts d'Angoulême

Curator(s): Jean-Francois Tournepiche

Cultural Attribution:

Geochronological Attribution:

Taxon / Sex / Age Group

Taxon: Neanderthal

Sex: Undefined

Age Group: adult (20yrs or more)

Morphometrics

Pathology / Preservation

Pathology:

Pathology Bibliography:

Preserved Skeletal Party: cranial fragment temporal

Laterality: left

Polarity: unknown

Preservation: fragmentary

Preservation Details:

Human Activity:

Carnivore Activity:

Age Determination

Dating Abstract: This layer has been attributed to the Riss III by André Debénath (1974)

Dating Association: Relative Dating

Dating Analysis:

Pix

Discovery

Location:

X Coordinate:

Y Coordinate:

Z Coordinate:

Unit: m

Linked Files / Pages

Data Type:

Collection Item(s):

Bibliography:

Piveteau 1970

David, Piveteau 1953

Multimedia Files:

SRmicroCT_S17

STL_S17

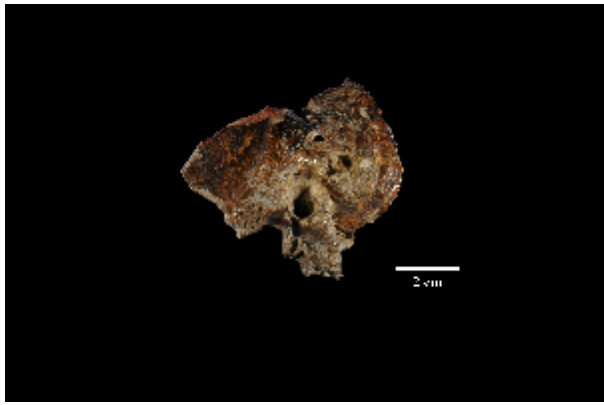
Linked Pages:

France - Neanderthal

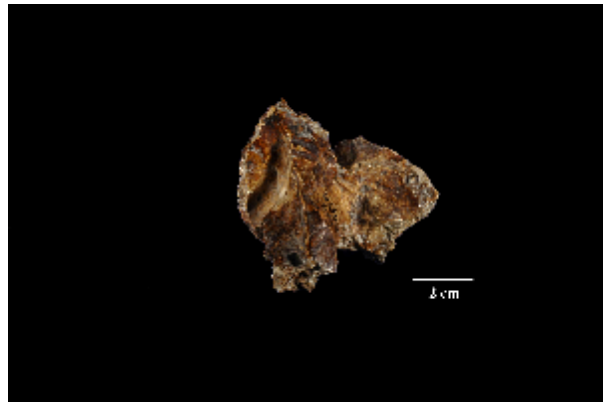
Index:

Additional Content

The anterior part of this temporal is missing. The zygomatic apophysis is only represented by its root, thick and high (elevée?), with an almost rectangular section. The tympanic region shows an elliptic internal acoustic meatus (conduit auditif) in an elevated position. On the posterior edge of this meatus, there is a sort of exostosis but it shouldn't be pathologic (Piveteau, 1970). This specimen connects with [udpdata:S1] c) Aude Bergeret, Musée des Beaux-Arts d'Angoulême 2005



(c) Aude Bergeret, Musée des Beaux-Arts d'Angoulême 2005



(c) Aude Bergeret, Musée des Beaux-Arts d'Angoulême 2005



(c) Aude

top of page