

Pedmostí I - individuum P4

General Information

Name: Pedmostí 4

Synonym Name(s):

First Description: K.J. Maška 1894

Repository:

Property Status:

Copyright Holder(s): Department of Anthropology and Human Genetics, Faculty of Science, Charles University in Prague

Curator(s):

Cultural Attribution: Upper Palaeolithic: Gravettian

Geochronological Attribution:

Taxon / Sex / Age Group

Taxon: Homo sapiens

Sex: Female

Age Group: adult (20y or more)

Morphometrics

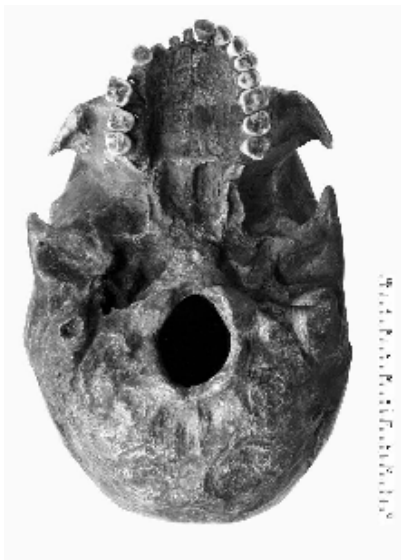
Age Determination

Dating Abstract:

Dating Association:

Dating Analysis:

Pix



* Department of Anthropology and Human Genetics, Faculty of Science, Charles University in Prague

Skull with mandible (P4), basal view (© Department of



* Department of Anthropology and Human Genetics, Faculty of Science, Charles University in Prague

Skull (P4), posterior view (© Department of Anthropology and



© Dq
Cb

Skull w

Discovery

Location:

Linked Files / Pages

Collection Item(s):

Bibliography:

Multimedia Files:

Linked Pages:

Czech Republic - Anatomically Modern human
Repository Czech Republic - Homo sapiens sapiens

Index:

Additional Content



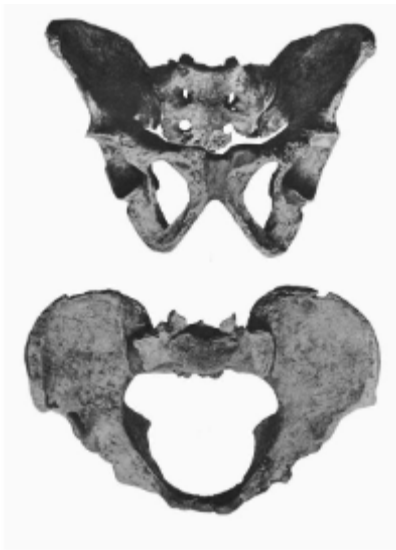
© Department of Anthropology and Human Genetics, Faculty of Science, Charles University in Prague

Skull with mandible (P4), anterior view (© Department of Anthropology and Human Genetics, Faculty of Science, Charles University Prague).



© Department of Anthropology and Human Genetics, Faculty of Science, Charles University in Prague

Complete skeleton P4 anterior view (© Department of Anthropology and Human Genetics, Faculty of Science, Charles University Prague). Femur, tib



© Department of Anthropology and Human Genetics, Faculty of Science, Charles University in Prague

Pelvis (P4), anterior and superior view (© Department of Anthropology and Human Genetics, Faculty of Science, Charles University Prague).



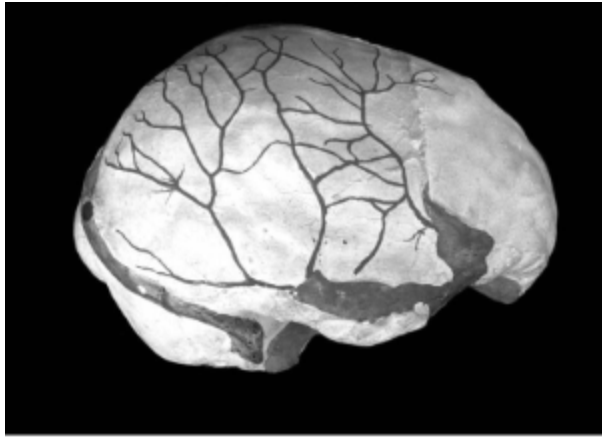
© Department of Anthropology and Human Genetics, Faculty of Science, Charles University in Prague

Endocranium (P4), posterior view (© Department of Anthropology and Human Genetics, Faculty of Science, Charles University Prague). End



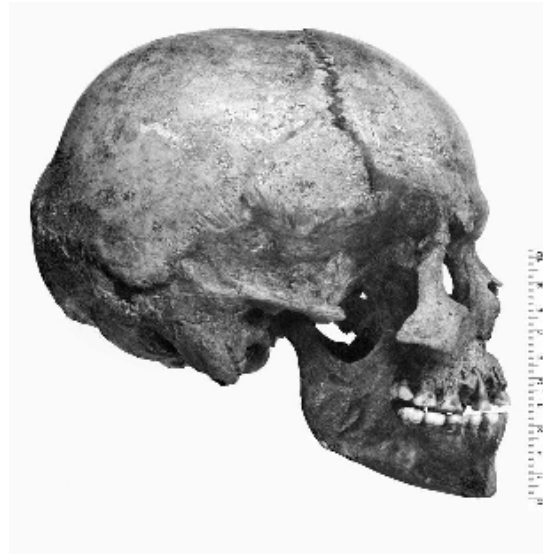
© Department of Anthropology and Human Genetics, Faculty of Science, Charles University in Prague

End Anthropo



© Department of Anthropology and Human Genetics, Faculty of Science, Charles University in Prague

Endocranium (P4), lateral view (dx) (© Department of Anthropology and Human Genetics, Faculty of Science, Charles University Prague).



© Department of Anthropology and Human Genetics, Faculty of Science, Charles University in Prague

Skull with mandible (P4), lateral view (dx) (© Department of Anthropology and Human Genetics, Faculty of Science, Charles University Prague).

Skull



© Department of Anthropology and Human Genetics, Faculty of Science, Charles University in Prague

Skull (P4), posterior view (© Department of Anthropology and Human Genetics, Faculty of Science, Charles University Prague).



© Department of Anthropology and Human Genetics, Faculty of Science, Charles University in Prague

Skull with mandible, the detail of jaws (P4), lateral view (sin) (© Department of Anthropology and Human Genetics, Faculty of Science, Charles University Prague).



© Department of Anthropology and Human Genetics, Faculty of Science, Charles University in Prague

Skull with mandible



© Department of Anthropology and Human Genetics, Faculty of Science, Charles University in Prague

Skull with mandible (P4), superior view (© Department of Anthropology and Human Genetics, Faculty of Science, Charles University Prague).



© Department of Anthropology and Human Genetics, Faculty of Science, Charles University in Prague

Skull with mandible (P4), basal view (© Department of Anthropology and Human Genetics, Faculty of Science, Charles University Prague).

[top of page](#)