

Abri Suard Debénath 53 - premolar P3 (S35)

General Information

Name: S35

Synonym Name(s):

First Description: Genet-Varcin 1976

Repository: Musée des Beaux-Arts d'Angoulême

Property Status: Ville d'Angoulême

Copyright Holder(s): Musée des Beaux-Arts d'Angoulême

Curator(s): Jean-Francois Tournepiche

Cultural Attribution: Middle Palaeolithic: Mousterian

Geochronological Attribution:

Taxon / Sex / Age Group

Taxon: Neanderthal

Sex: Undefined

Age Group: adult (20yrs or more)

Morphometrics

Pathology / Preservation

Pathology:

Pathology Bibliography:

Preserved Skeletal Party: premolar P3

Laterality: right

Polarity: upper

Preservation: fragmentary

Preservation Details:

the extremity of the crown is missing (important alteration) (Genet-Varcin, 1976), and the apex of the root is broken

Human Activity:

Carnivore Activity:

Age Determination

Dating Abstract: This layer is dated from Riss III

Dating Association: Relative Dating

Dating Analysis:

Pix

Discovery

Location:

X Coordinate:

Y Coordinate:

Z Coordinate:

Unit: m

Linked Files / Pages

Data Type:

Collection Item(s):

Bibliography:

Debénath 1973

Genet-Varcin 1974

Legoux 1976

Genet-Varcin 1976

Multimedia Files:

STL_S35

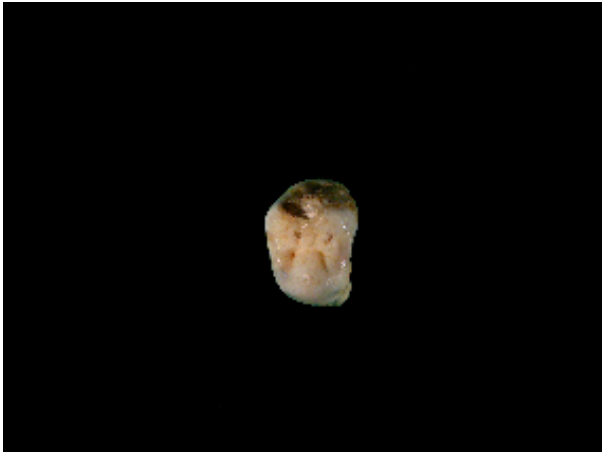
SRmicroCT_S35, info

Linked Pages:

France - Neanderthal

Index:

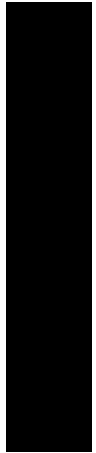
Additional Content



(c) Aude Bergeret, Musée des Beaux-Arts d'Angoulême 2005



(c) Aude Bergeret, Musée des Beaux-Arts d'Angoulême 2005



(c) Aude

[top of page](#)