

Les Rochers de Villeneuve

General Information

Site Name: Les Rochers de Villeneuve

Synonym Name(s):

Site Type: cave

More Info to Site Type:

Discovery Year: 1969

First Description:

Chronological Abstract:

Linked Files / Pages

Collection Item(s):

Bibliography: Beauval 2005b; Beauval et al. 2005

Multimedia Files:

Linked Pages:

[France - Neanderthal](#)

Index:

[Expand all](#) [Collapse all](#)

Location

 Loading Google Maps...

Additional Content

Country: France

General Location Description:

The cave is situated between the valleys of the Vienne and the Gartempe near the village of Lussac-les-Châteaux (Vienne), approximately 40km in the South-East of Poitiers

Coordinates

Latitude (WGS84): 46.404° N

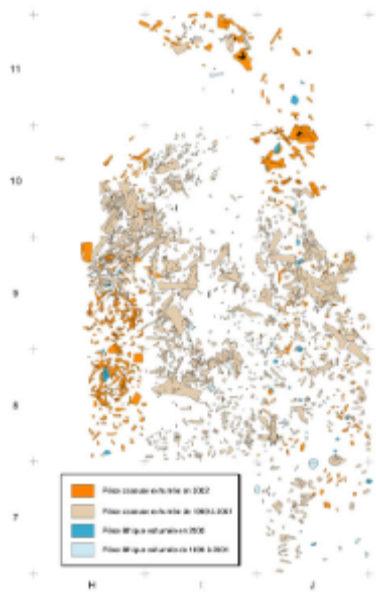
Longitude (WGS84): 0.727° E

Altitude: 0

GIS Precision:

Other Coordinates:

[Pix](#)



<http://www.ipgq.u-bordeaux1.fr/Pages/operations/ipages/irochers.html>.
<http://www.ipgq.u-bordeaux1.fr/Pages/operations/ipages/irochers.html>
 top of page